

## 05 Font Upgrade Install Guide

Hello, and thank you for purchasing the JHP '05/'06 GTO Font Facia Upgrade self install kit for the JHP GTO Sports Binnacle Kit.

This installation material is a guide only and as such all care should be taken. JHP takes no responsibility for any damage occurring to either the upgrade faceplate or any other part of the gauge kit that may have been caused by following this guide. Please read this guide thoroughly before you begin.

If you have any hesitation please seek professional advice and assistance.

Enjoy your new font facia upgrade.

Regards,  
JHP.

- 1) The Gauge. Red arrows are showing a starting disassembly points



- 2) Using your GTO key (the best tool), press clear plastic clip in towards the gauges and up. (Repeat for both top points.)



3) Repeat the same steps on the inner side. Plastic should lift up a little  
If plastic did lift up, you can try pulling the gauge cover with your other hand while pressing with the key.



4) If the gauge cover still doesn't rise up, you can try inserting something between the gauge and the clear cover and use a little force to raise it.



5) The clear cover is ready to come off. Just lift it off.



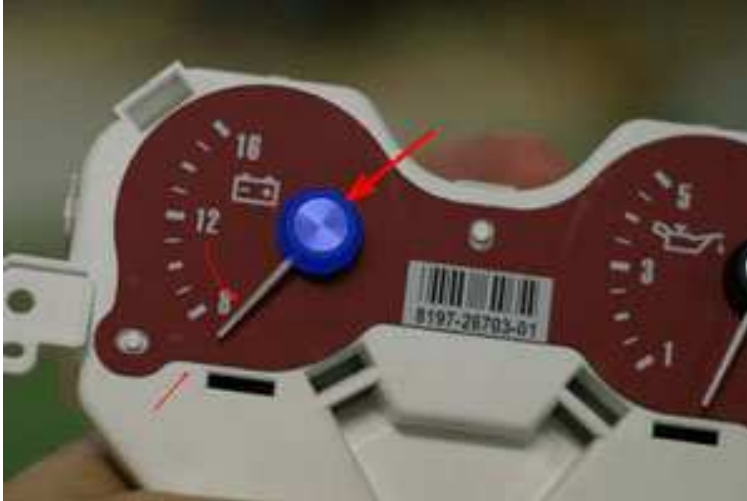
6) Unclip the two holding clips for the black surrounds.



7) Swing the black plastic up and remove it



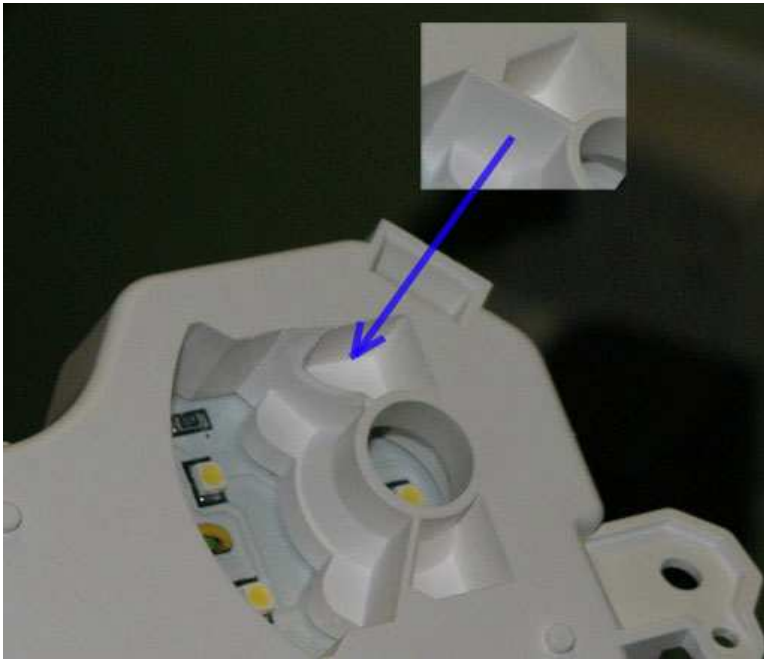
8) Rotate the needle counter clockwise to the stop point and mark its position. Hold the needle by the centre (marked blue in the picture) and start pulling it up as you rotate it past the stop point. Keep pulling the needle up as you continue to rotate it counter clockwise. Repeat this step with the other needle.  
**DO NOT USE ANY TOOLS TO PULL THE NEEDLE UP AS IT MIGHT DAMAGE THE COLOR DIALS.**



9) Remove the dial face plate and store in a clean safe place.



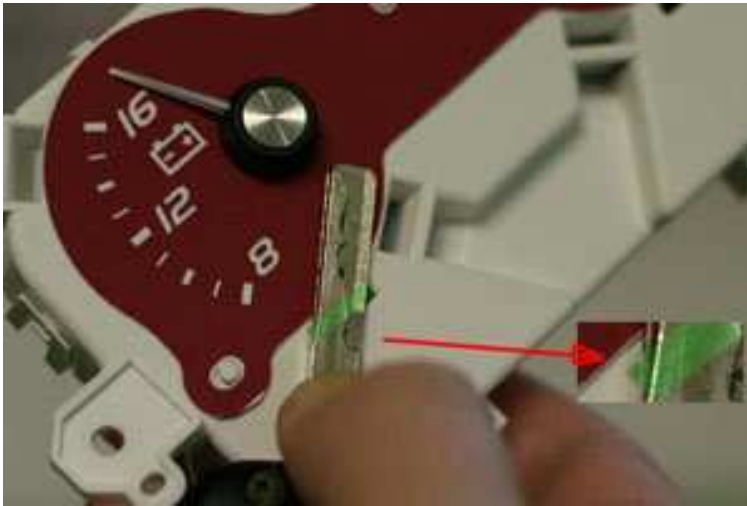
9a) For those with the **PSI oil pressure measurements**, you will need to relieve the factory gauge housing for illumination for the 75PSI. See Picture below



10) Now replace them with your new font upgrade facia.



**11)** Replace the needle back by rotating it counter clockwise while pushing it down. After the needle is in place, make sure that it does not go below the point shown in the picture. The needle should stop at its original stop point. See next picture



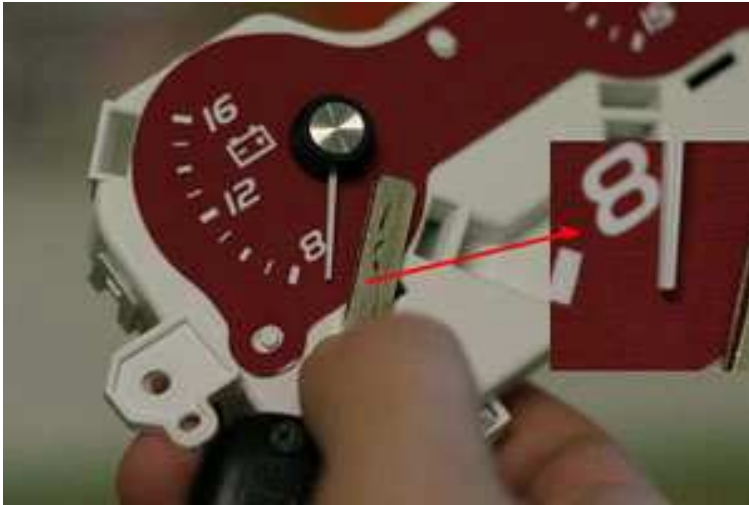
**12)** Picture shows the flex of the needle and its mechanism. The needle will return back a little.



**13)** If the needle stops lower than the position you marked in step 8, it should be rotated counter clockwise a full circle via the black centre piece and not the via the needle.

This picture also shows that if needle stops right under number 8, it can be considered perfectly calibrated (maybe even better than it came from the factory).

Oil pressure needle on the '05 gauges must have the same position as the voltage needle.



**14)** Example of the accuracy of a gauge if calibrated as described in previous steps  
If you are not comfortable with the directions in this guide, you might want to ask a person with experience to do the change over for you.

